

Client

WHOLESALE BOTANICS .COM

Source



Copaiba balsam (*Copaifera officinalis*)
K-COP

Sample

Copaiba balsam (*Copaifera officinalis*)

Batch #:..... K-COP

Type:..... Essential Oil

CAS Number:... 8001-61-4

Wholesale Botanics

Client

WHOLESALE BOTANICS .COM

Website



Primary

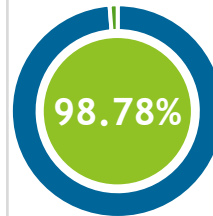
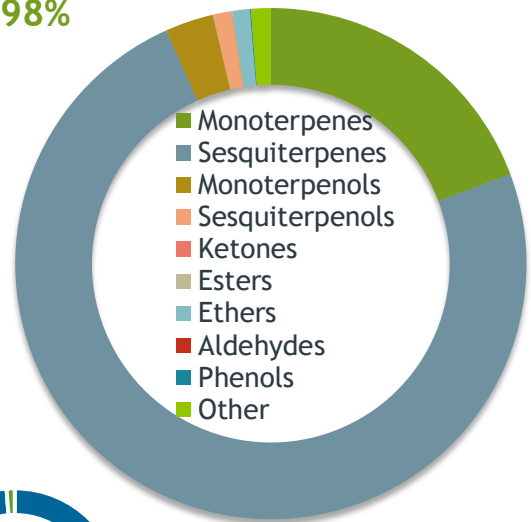
46.98% beta-Caryophyllene

9.50% beta-Pinene

9.07% alpha-Pinene

Sesquiterpenes

73.98%



Percentage Identified

Result



Conclusion

No adulterants, diluents, or contaminants were detected via this method. This oil meets the expected profile for genuine Essential Oil of Copaiba balsam (*Copaifera officinalis*)

Internal Number: | EVS-5296



Essential Validation Services

747 SW 2nd Ave IMB 12 Suite 306
Gainesville, FL 32601

317.361.5044 |
<https://essentialvalidationservices.com/>

Alan Chastain

Monoterpenes	19.31%	19.31%
Sesquiterpenes	73.98%	73.98%
Monoterpenols		3.06%
Sesquiterpenols		1.16%
Ketones		0.03%
Esters		0.07%
Ethers		1.08%
Aldehydes		0.00%
Phenols		0.06%
Other		1.25%

Client

**WHOLESALE
BOTANICS**
.COM

Source


Copaiba balsam (Copaifera officinalis)

K-COP

Total Percentage		98.78%		
Number	RT	Area %	Compound Name	Chemical Family
1	7.49	0.03%	Hashishene	Monoterpene
2	7.74	0.37%	alpha-Thujene	Monoterpene
3	8.01	9.07%	alpha-Pinene	Monoterpene
4	8.59	0.08%	Camphene	Monoterpene
5	9.53	0.05%	Sabinene	Monoterpene
6	9.72	9.50%	beta-Pinene	Monoterpene
7	10.27	0.03%	Myrcene	Monoterpene
8	10.91	0.01%	alpha-Phellandrene	Monoterpene
9	11.00	0.01%	delta-3-Carene	Monoterpene
10	11.71	0.03%	ortho-Cymene	Monoterpene
11	11.91	0.05%	Limonene	Monoterpene
12	12.00	0.03%	1,8-Cineole	Monoterpene Ether
13	12.29	0.05%	(Z)-beta-Ocimene	Monoterpene
14	15.46	0.01%	alpha-Pinene oxide	Monoterpene Ether
15	16.46	0.03%	Alloocimene	Monoterpene
16	16.89	0.02%	trans-Pinocarveol	Monoterpenol
17	17.16	0.01%	trans-Verbenol	Monoterpenol
18	18.35	0.01%	Borneol	Monoterpenol
19	18.78	2.81%	Terpinen-4-ol	Monoterpenol
20	19.48	0.03%	Myrtenol	Monoterpenol
21	25.69	0.28%	delta-Elemene	Sesquiterpene
22	26.21	0.68%	alpha-Cubebene	Sesquiterpene
23	26.44	0.06%	Eugenol	Phenylpropanoid
24	26.76	0.01%	alpha-Longipinene	Sesquiterpene
25	27.03	0.08%	Longicyclene	Sesquiterpene
26	27.12	0.03%	alpha-Ylangene	Sesquiterpene
27	27.46	8.77%	alpha-Copaene	Sesquiterpene
28	27.72	0.02%	beta-Bourbonene	Sesquiterpene
29	27.94	0.48%	beta-Cubebene	Sesquiterpene
30	28.03	0.40%	beta-Elemene	Sesquiterpene
31	28.48	0.10%	Cyperene	Sesquiterpene
32	28.61	0.15%	cis-Caryophyllene	Sesquiterpene
33	28.72	0.18%	alpha-Gurjunene	Sesquiterpene
34	29.42	46.98%	beta-Caryophyllene	Sesquiterpene
35	29.59	0.08%	Isocaryophyllene	Sesquiterpene

 ESSENTIAL VALIDATION SERVICES | 747 SW 2ND AVE GAINESVILLE, FLORIDA 32601 | 317-361-5044

- Essential Oil testing is performed by using qualitative GC-MS. Method: SOP.T.01 Client Method
 - This report may not be published without the consent of Essential Validation Services.
 - Chromatograph image may be requested
 - This report is valid for 1 year from the analyzed date

Client

**WHOLESALE
BOTANICS**
.COM

Source



Copaiba balsam (Copaifera officinalis)
K-COP

Number	RT	Area %	Compound Name	Chemical Family
36	29.701	0.58%	gamma-Elemene	Sesquiterpene
37	29.88	1.22%	trans-alpha-Bergamotene	Sesquiterpene
38	29.99	0.05%	Aromadendrene	Sesquiterpene
39	30.18	0.10%	(Z)-beta-Farnesene	Sesquiterpene
40	30.43	0.07%	trans-Muurola-3,5-diene	Sesquiterpene
41	30.68	2.07%	alpha-Humulene	Sesquiterpene
42	30.85	0.37%	allo-Aromadendrene	Sesquiterpene
43	31.40	0.14%	trans-Cadina-1(6),4-diene	Sesquiterpene
44	31.54	0.81%	gamma-Muurolene	Sesquiterpene
45	31.74	1.69%	Germacrene D	Sesquiterpene
46	31.91	0.19%	Zingiberene	Sesquiterpene
47	32.03	0.36%	beta-Selinene	Sesquiterpene
48	32.33	0.47%	alpha-Selinene	Sesquiterpene
49	32.42	0.12%	alpha-Zingiberene	Sesquiterpene
50	32.50	0.36%	alpha-Muurolene	Sesquiterpene
51	32.66	0.22%	cis-alpha-Bisabolene	Sesquiterpene
52	32.95	1.99%	beta-Bisabolene	Sesquiterpene
53	33.04	0.52%	gamma-Cadinene	Sesquiterpene
54	33.33	3.30%	delta-Cadinene	Sesquiterpene
55	33.45	0.30%	Zonarene	Sesquiterpene
56	33.53	0.17%	beta-Sesquiphellandrene	Sesquiterpene
57	33.65	0.03%	trans-gamma-Bisabolene	Sesquiterpene
58	33.81	0.15%	trans-Cadina-1,4-diene	Sesquiterpene
59	33.96	0.17%	alpha-Cadinene	Sesquiterpene
60	34.22	0.23%	trans-alpha-Bisabolene	Sesquiterpene
61	34.46	0.07%	cis-Sesquisabinene hydrate	Monoterpene Ester
62	34.75	0.06%	Germacrene B	Sesquiterpene
63	35.16	0.05%	Maaliol	Sesquiterpenol
64	35.39	0.18%	Caryophyllenyl alcohol	Monoterpenol
65	35.48	0.04%	Spathulenol	Sesquiterpenol
66	35.64	0.98%	Caryophyllene oxide	Sesquiterpene Ether
67	35.94	0.02%	Gleenol	Sesquiterpenol
68	36.13	0.04%	Viridiflorol	Sesquiterpenol
69	36.52	0.06%	Globulol	Sesquiterpenol
70	36.69	0.06%	Humulene epoxide II	Sesquiterpene Ether
71	37.15	0.22%	Junenol	Sesquiterpenol

ESSENTIAL VALIDATION SERVICES | 14 / SW 2ND AVE GAINESVILLE, FLORIDA 32601 | 352-350-5044

- Essential Oil testing is performed by using qualitative GC-MS. Method: SOP.T.01 Client Method
 - This report may not be published without the consent of Essential Validation Services.
 - Chromatograph image may be requested
 - This report is valid for 1 year from the analyzed date



Copaiba balsam (Copaifera officinalis)
K-COP

72	37.28	0.02%	Rosifoliol	Sesquiterpenol
73	37.44	0.12%	1-epi-Cubenol	Sesquiterpenol
74	37.99	0.11%	T-Cadinol	Sesquiterpenol
75	38.06	0.14%	T-Muurolol	Sesquiterpenol
76	38.16	0.13%	alpha-Muurolol	Sesquiterpenol
77	38.47	0.19%	alpha-Cadinol	Sesquiterpenol
78	38.82	0.02%	trans-Calamenen-10-ol	Sesquiterpenol
79	39.97	0.03%	Junipercamphor	Sesquiterpene Ketone
80	51.74	0.02%	Manool	Diterpenol
81	56.97	0.01%	Sclareol	Diterpenol